

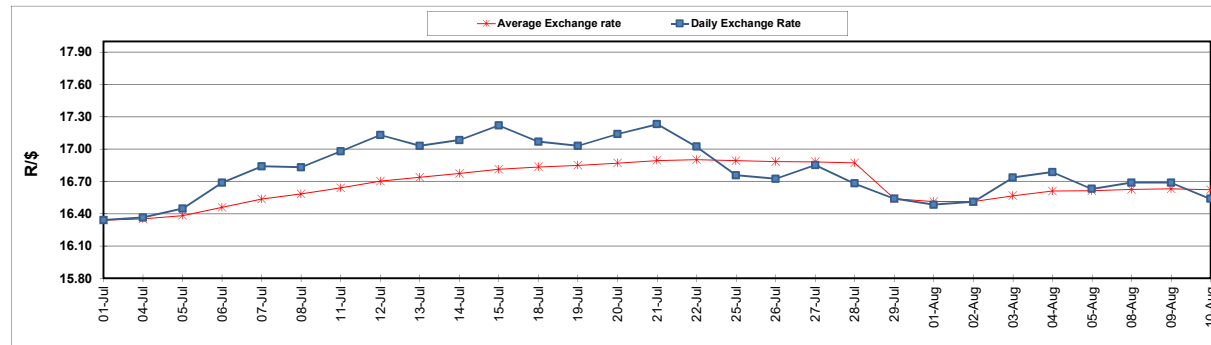
| | PETROL 95 ULP | PETROL 93 ULP & LRP | DIESEL 0.05% | DIESEL 0.005% | ILL. PAR. |
|--|------------------|------------------------|-----------------|------------------|-----------|
| GAUTENG PUMP PRICE (SA c/l) AS FROM 03/08/2022 | 2,542.000 | 2,499.000 | - | - | - |
| WHOLESALE PRICE (SA c/l) AS FROM 03/08/2022 | - | - | 2,452.440 | 2,461.840 | 1,842.288 |
| SINGLE NATIONAL MAXIMUM RETAIL PRICE | - | - | - | - | 2,431.000 |
| BASIC FUEL PRICE - 10/08/2022 (SA c/l) | 1,249.388 | 1,223.183 | 1,374.870 | 1,395.101 | 1,432.658 |
| PRESS RELEASE CONTRIBUTION TO BFP 03/08/2022 - 10/08/2022 (SA c/l) | 1,482.410 | 1,439.410 | 1,600.630 | 1,610.030 | 1,624.128 |
| UNIT OVER/(UNDER) RECOVERY - 10/08/2022 (SA c/l) | 233.022 | 216.227 | 225.760 | 214.929 | 191.470 |
| AVERAGE BASIC FUEL PRICE 29/07/2022 - 10/08/2022 | 1,283.082 | 1,254.901 | 1,413.579 | 1,428.896 | 1,469.073 |
| AVERAGE UNIT OVER/(UNDER) RECOVERY 29/07/2022 - 10/08/2022 | 268.328 | 253.509 | 241.385 | 236.467 | 203.055 |

ANALYSIS MOVEMENT OF AVERAGE OVER/(UNDER) RECOVERY

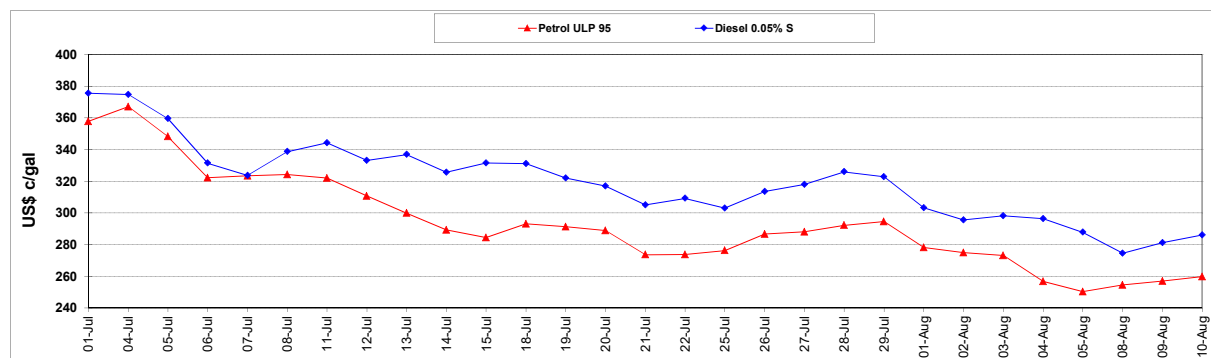
| | PETROL 95 | PETROL 93 | DIESEL 0.05% | DIESEL 0.005% | ILL. PAR. |
|--|-----------|-----------|--------------|---------------|-----------|
| - MOVEMENT IN INTERNATIONAL PRODUCT PRICES | 249.006 | 234.612 | 220.097 | 214.950 | 180.933 |
| - MOVEMENT IN EXCHANGE RATE | 19.322 | 18.897 | 21.287 | 21.517 | 22.122 |
| AVERAGE UNIT OVER/(UNDER) RECOVERY 29/07/2022 - 10/08/2022 | 268.328 | 253.509 | 241.385 | 236.467 | 203.055 |

R/\$ EXCHANGE RATE - (R/\$16.5375 - 10/08/2022)

EXCHANGE RATE USED IN BASIC FUEL PRICE



INTERNATIONAL PRODUCT PRICES OF BASKET USED IN BASIC FUEL PRICE



BASIC FUEL PRICE IN SA CENTS PER LITRE

